

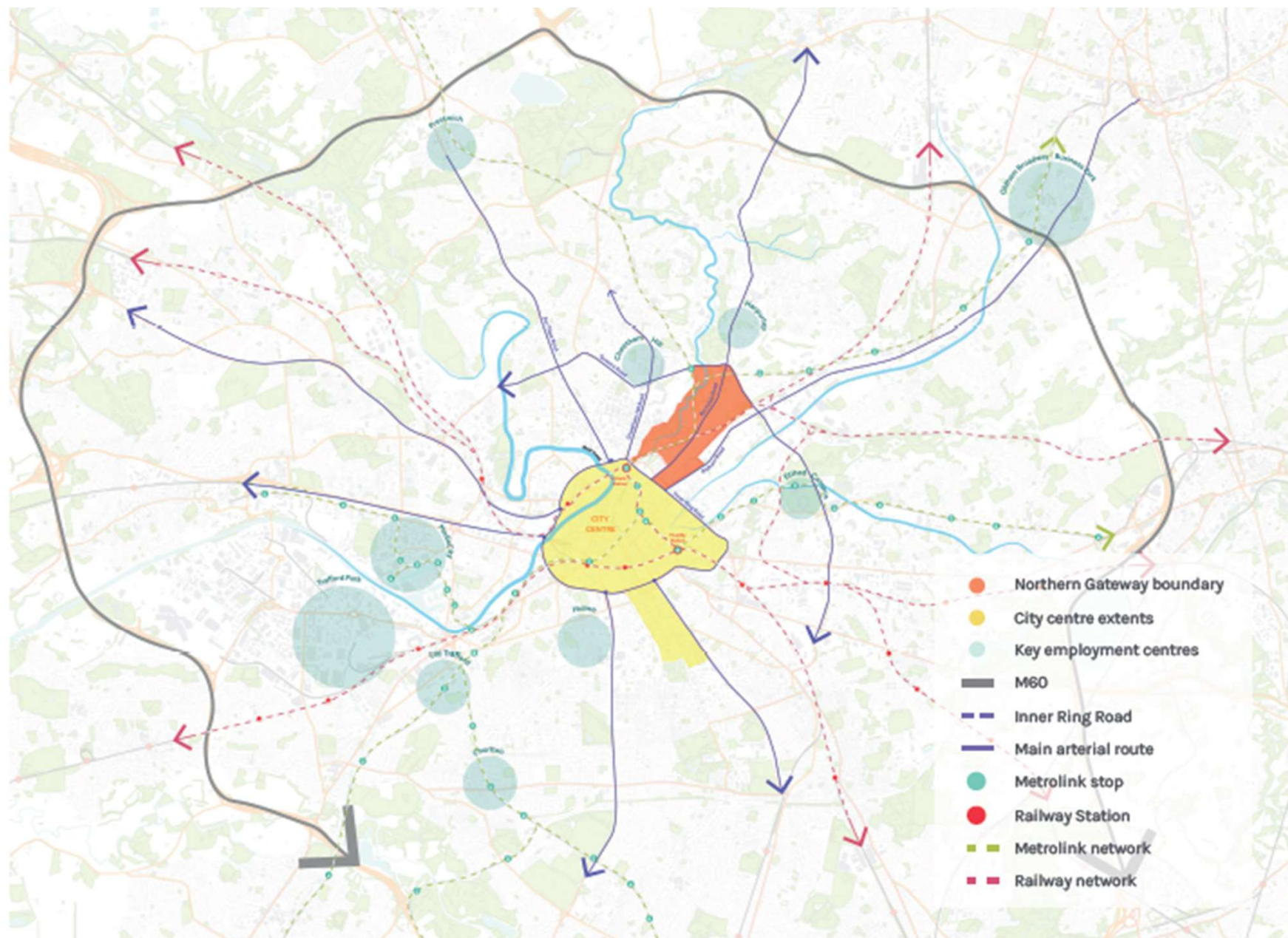


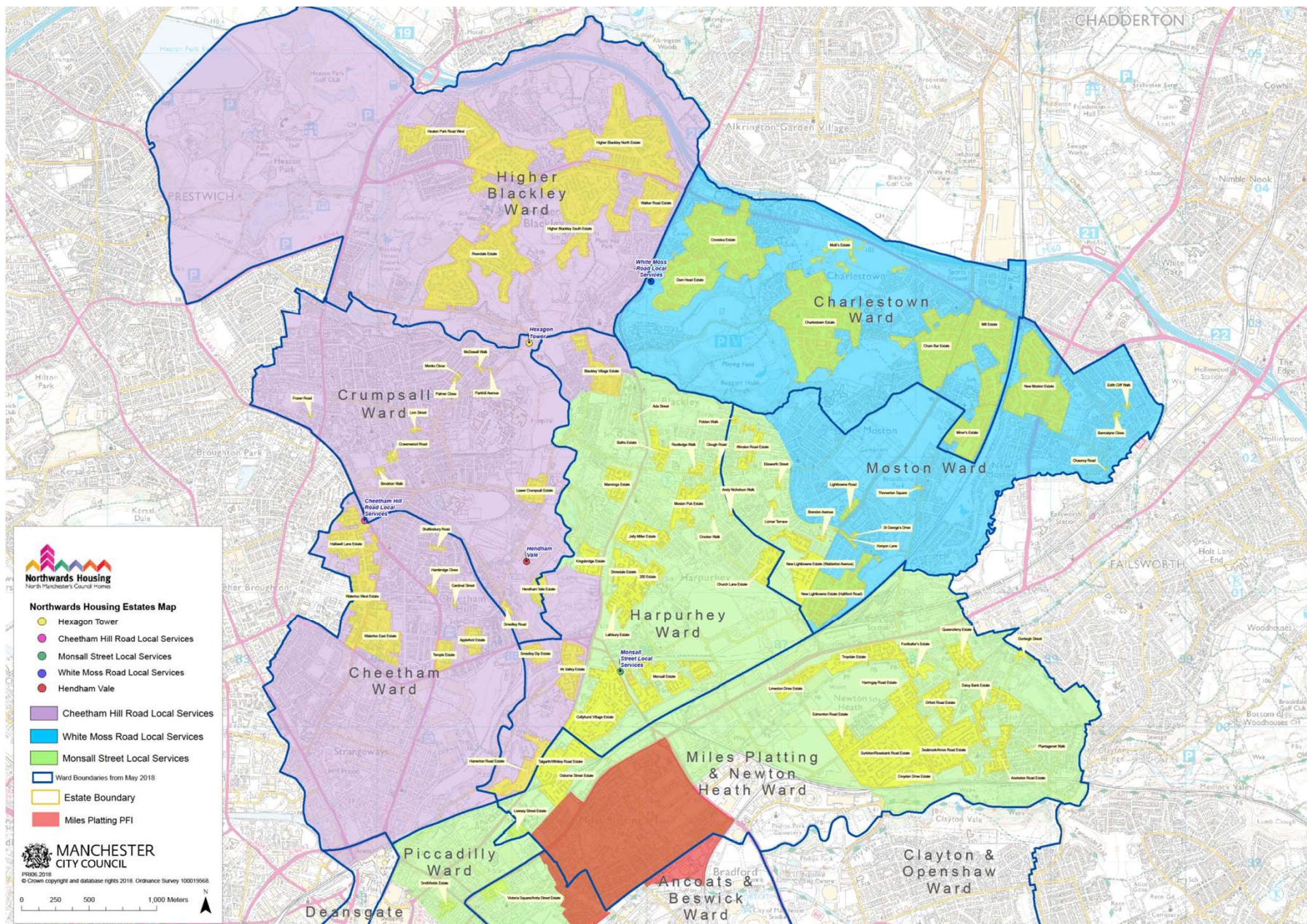
Inclusive Growth in Cities

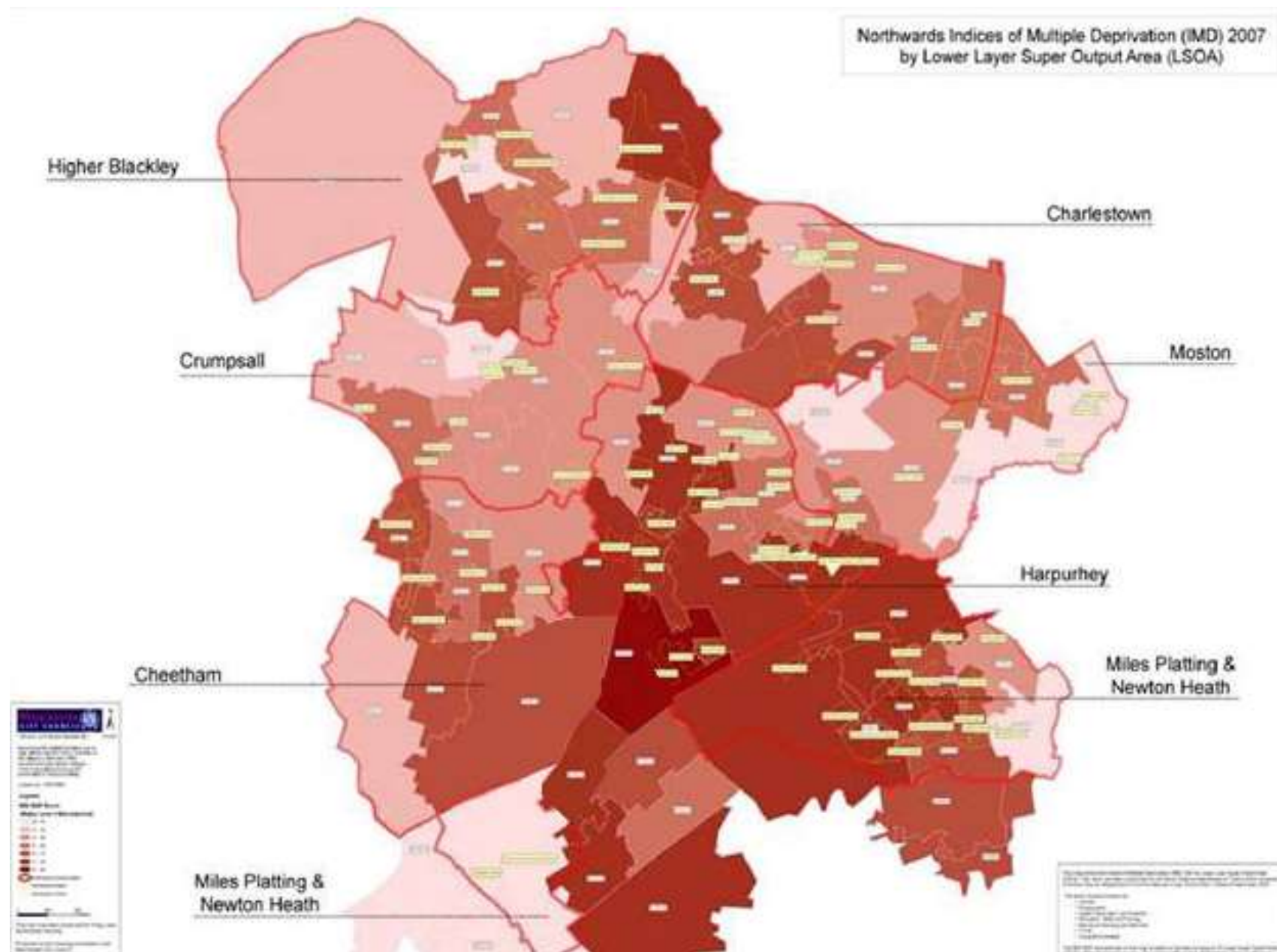
Collyhurst Study Visit

20:11:2019











ILLUSTRATIVE MASTERPLAN

In response to the SRF-wide and neighbourhood design and development principles, an Illustrative Masterplan is presented for the entire Northern Gateway which shows how the residential-led neighbourhoods could be developed.

- Retained utilities
- Railway/Metrolink
- Existing towers
- Key surrounding landmarks
- SRF development areas
- Local assets
- Blocks with open space views
- Key active frontages
- Mix of commercial and residential uses
- Social and community uses
- Green space
- Green link
- Public realm enhancements to major road
- River Walk
- Stairs
- Enhancements to public realm
- Enhancements to existing bridge
- Key passage through viaduct
- Proposed bridge over River Irk
- Enhanced treatment and permeability of railway arches
- Potential access from Red Bank Viaduct to the Ring Road and Victoria Station
- Primary Retail and Service Hub
- Secondary Retail and Service Hub
- Integrated transport hub
- Opportunities for distinctive landmark buildings with a focus on height
- Opportunities for distinctive landmark buildings with a focus on architectural treatment

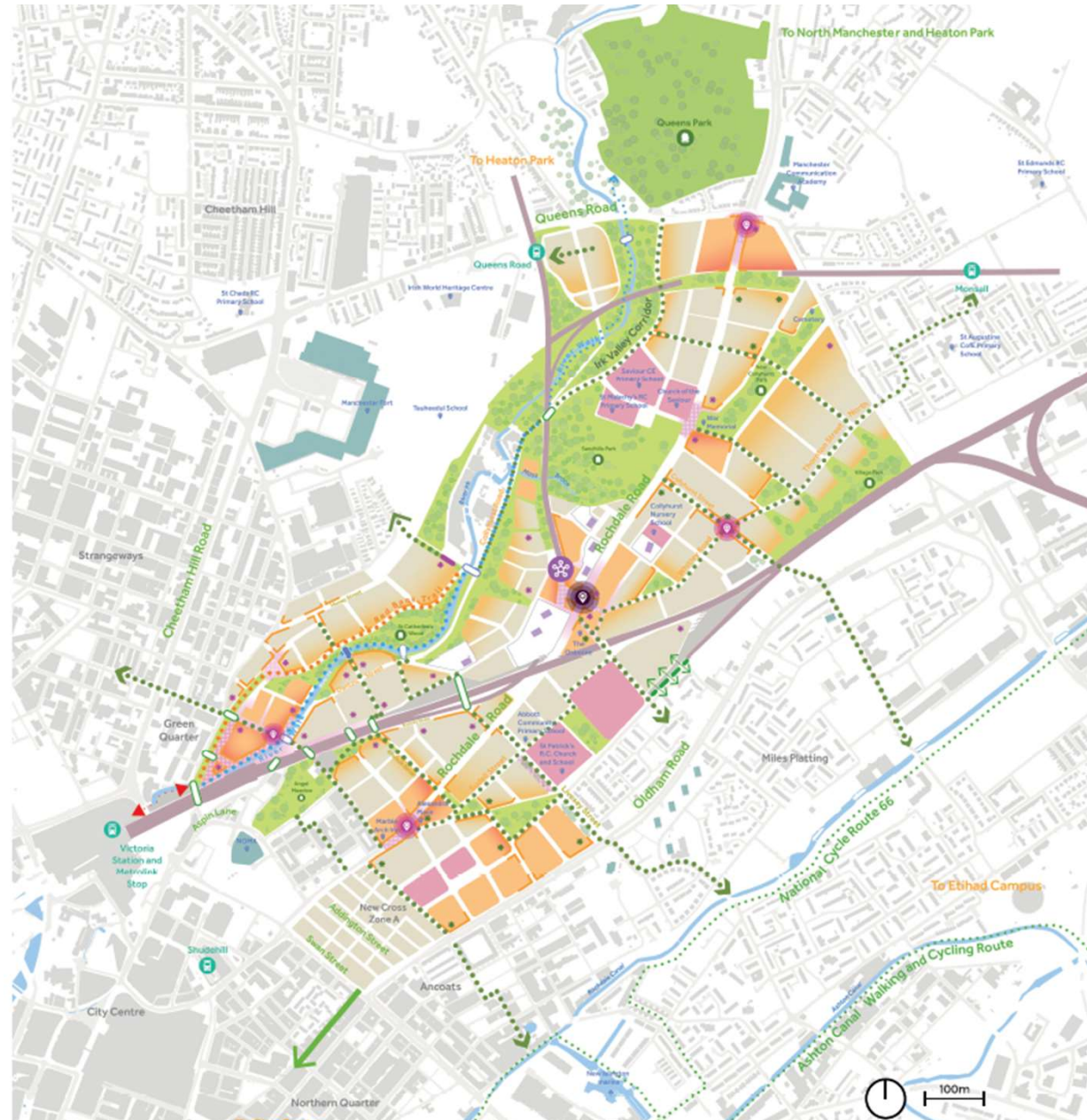


Figure 11 – Illustrative Masterplan

The Vision

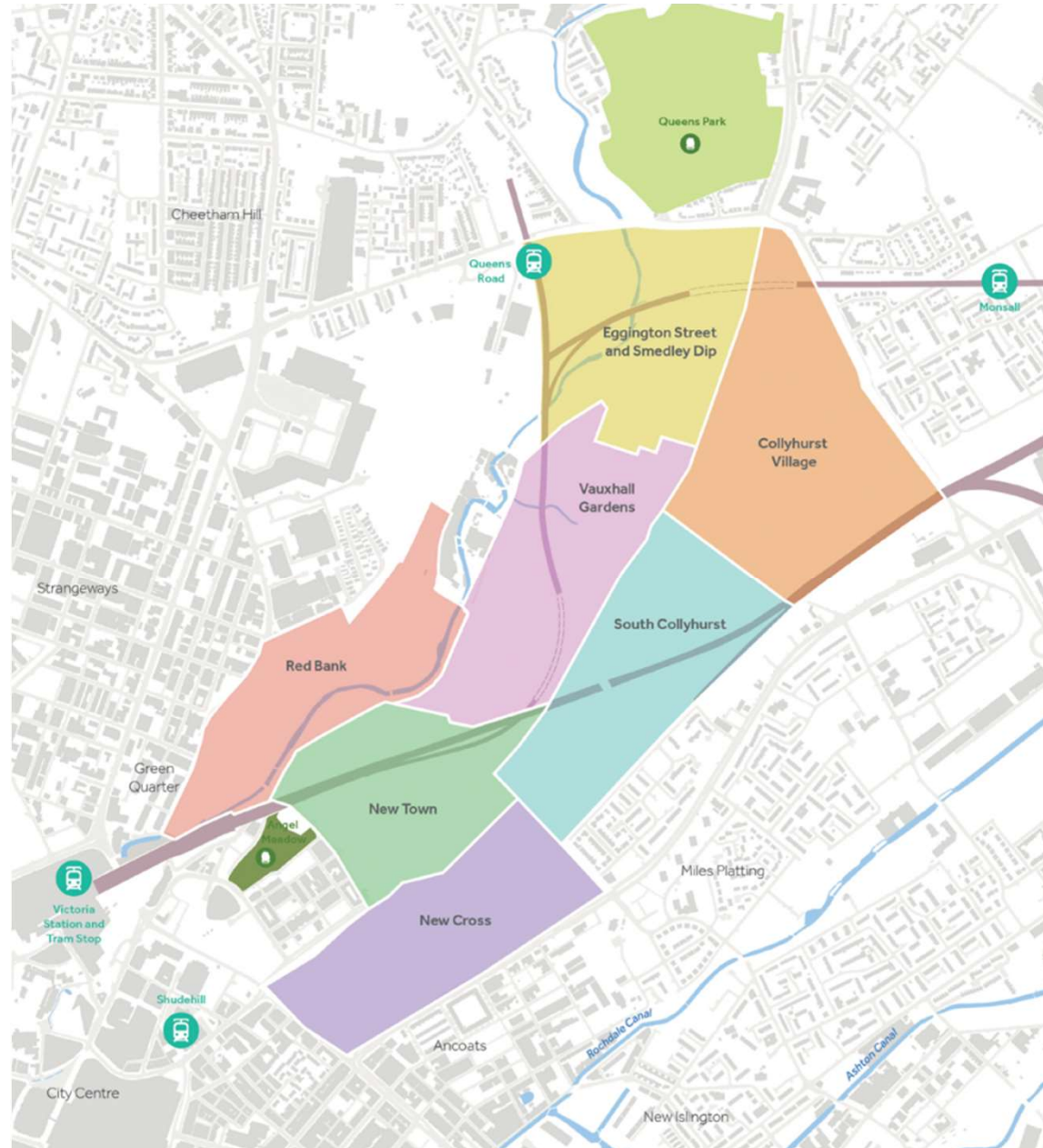
The Vision for the Northern Gateway is to deliver a series of vibrant, sustainable and integrated residential neighbourhoods within the extended city of Manchester.

These neighbourhoods will provide a range of housing options in a high-quality, well managed environment, with high levels of connectivity that link the growth of the city centre with surrounding Manchester communities. This will include the delivery of a range of affordable housing products to meet the needs of the residents on a range of incomes.

The Northern Gateway SRF will support long-term growth and promote economic, social and cultural uses to support the creation of high performing and sustainable new communities where people choose to live, work and play.

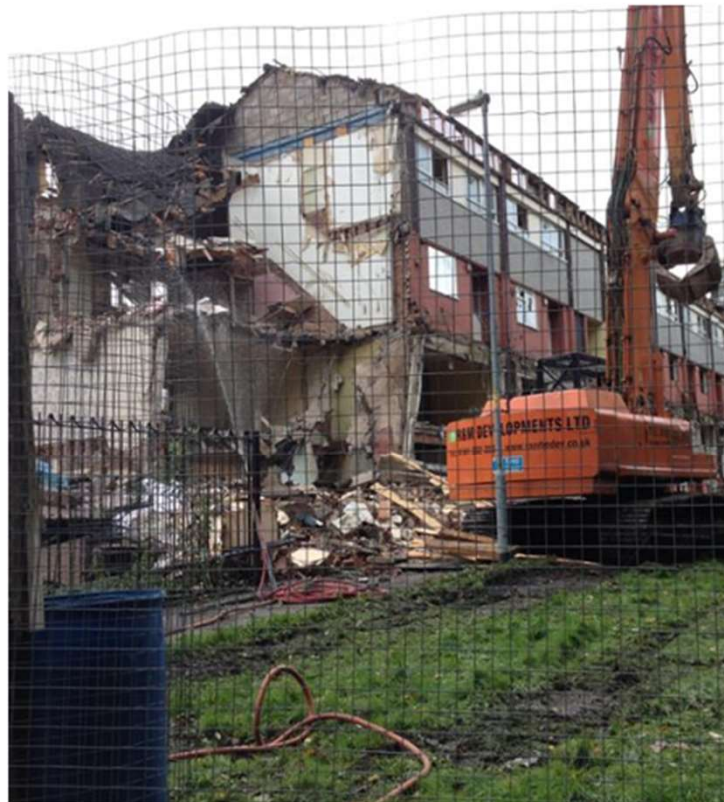
SFR wide development principles

1. Building residential-LED city neighbourhoods
2. Delivering social and community infrastructure
3. Delivering sustainable movement and transport connectivity
4. Urbanising Rochdale Road
5. Enhancing the green-blue infrastructure and public realm
6. Creation of the place
7. Promoting place management and design quality
8. Planning for a low carbon future





Strategic demolitions

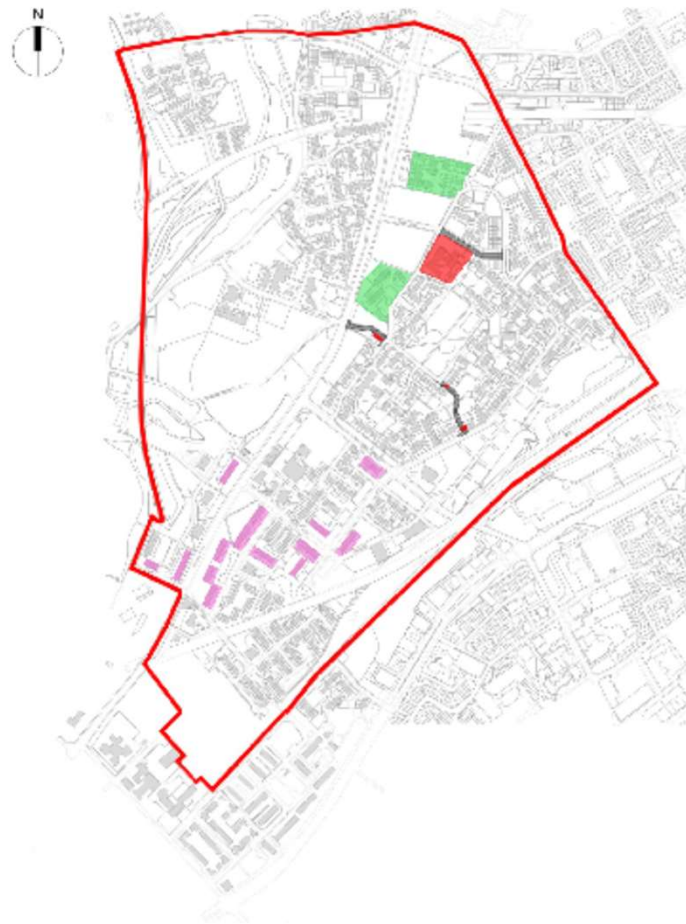


2012



2016

Phased approach



Collyhurst Master Plan

Proposed development (social housing)



Existing view

Collyhurst Master Plan

Artist's impression of proposed Apartments



Existing view

Collyhurst Master Plan

Artist's impression of proposed Houses
over-looking the park



Challenges



Consultation
Fatigue?



Apathy?



Mistrust?



Regeneration v
Gentrification?

Challenges



How do we ensure existing community benefits from opportunities?



Growth of city – do community see it as their city centre



How do we close the gap?



How do we measure distance travelled?



INSIDE HOUSING

and support Development Finance Fire safety Funding

Government to back construction academies to tackle skills crisis

NEWS 20/04/18 7:00 AM BY LUKE BARRATT

The government is preparing to back the building of “between 10 and 20 academies” around the country that would focus on construction to tackle the industry’s skills crisis.

